

# REPORT ON WATER TAKING FROM THE TAY RIVER.

2025 Calendar Year

March 26, 2026



THINKING OF TOMORROW

[omya.com](http://omya.com)



## Health and Safety Commitment

*Nothing is so urgent that we cannot take the time to do it safely and protect our health!*

“

*At Omya we believe in following health and safety practices everywhere and every time, to avoid any injury and promote health.*



# Health and Safety goes along with our Company Values



We always evaluate the hazards of any situation.



We always take care for the health and safety of people around us.



We always react and report any unsafe situation.



Our target is zero injury and a healthy life.



# Permit to Take Water Monitoring and Reporting

*Omya Canada Inc.*



*March 26, 2026*

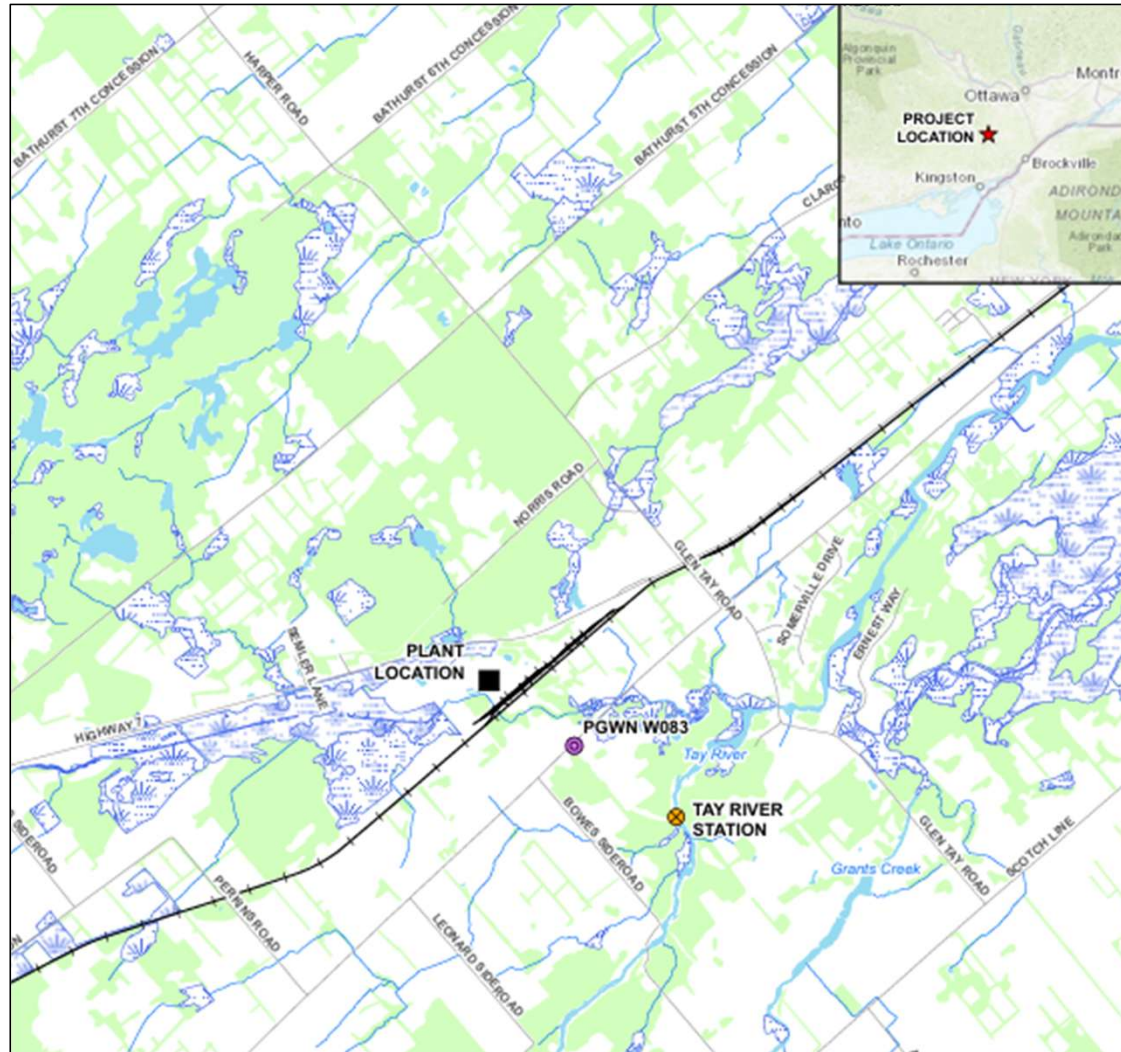
Outline:

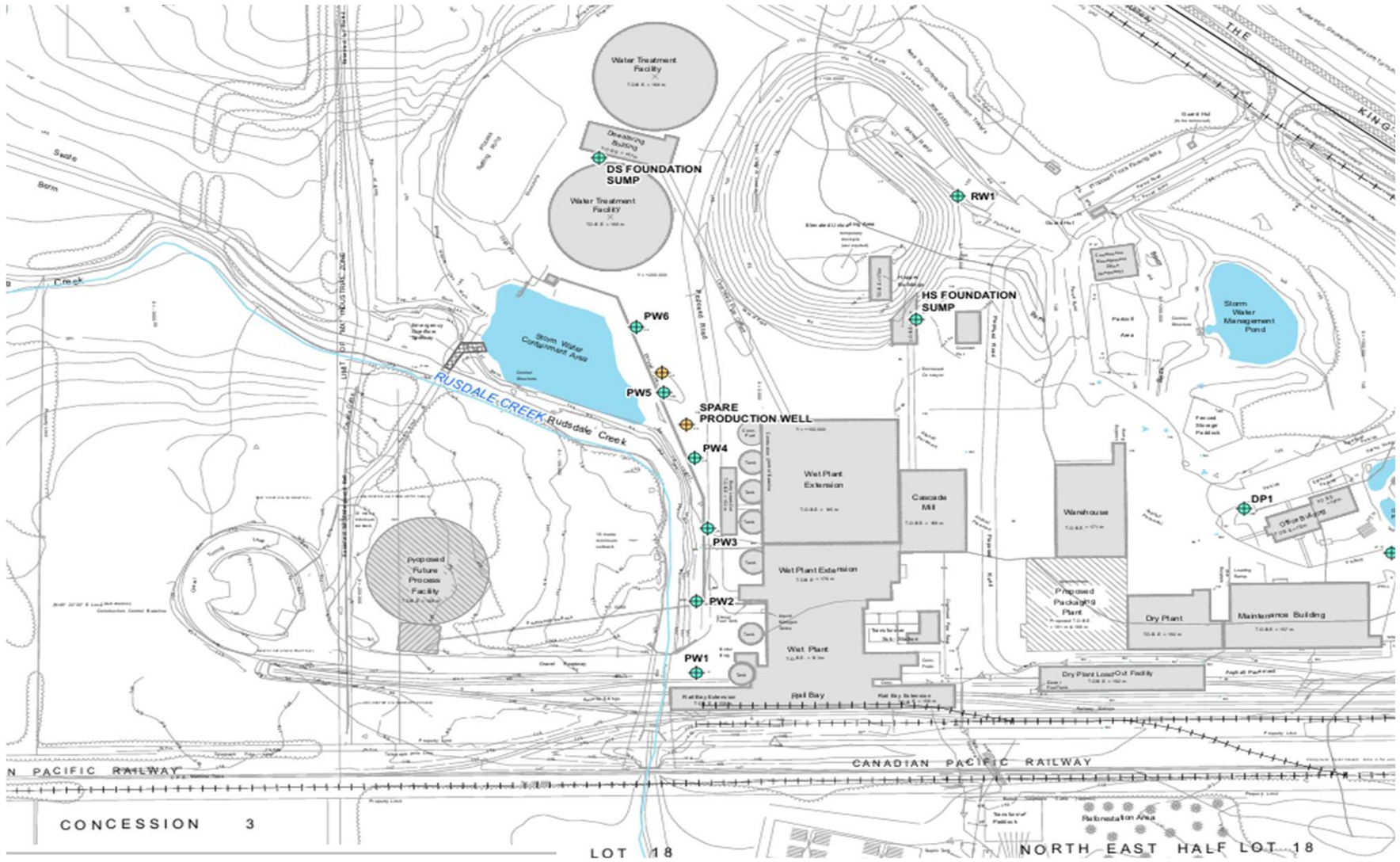
- 1) Site/ Groundwater Well Locations
- 2) Tay River Watershed
- 3) Water Taking Permitting Overview
- 4) Tay River Monitoring
- 5) Groundwater and Surface Takings
- 6) Summary



*March 26, 2026*

# Site/ Groundwater Well Locations





At a glance:

▪The **Tay River Watershed** spans approximately **850 square kilometers**.

▪The **Tay River** stretches about **95 kilometers** in length.

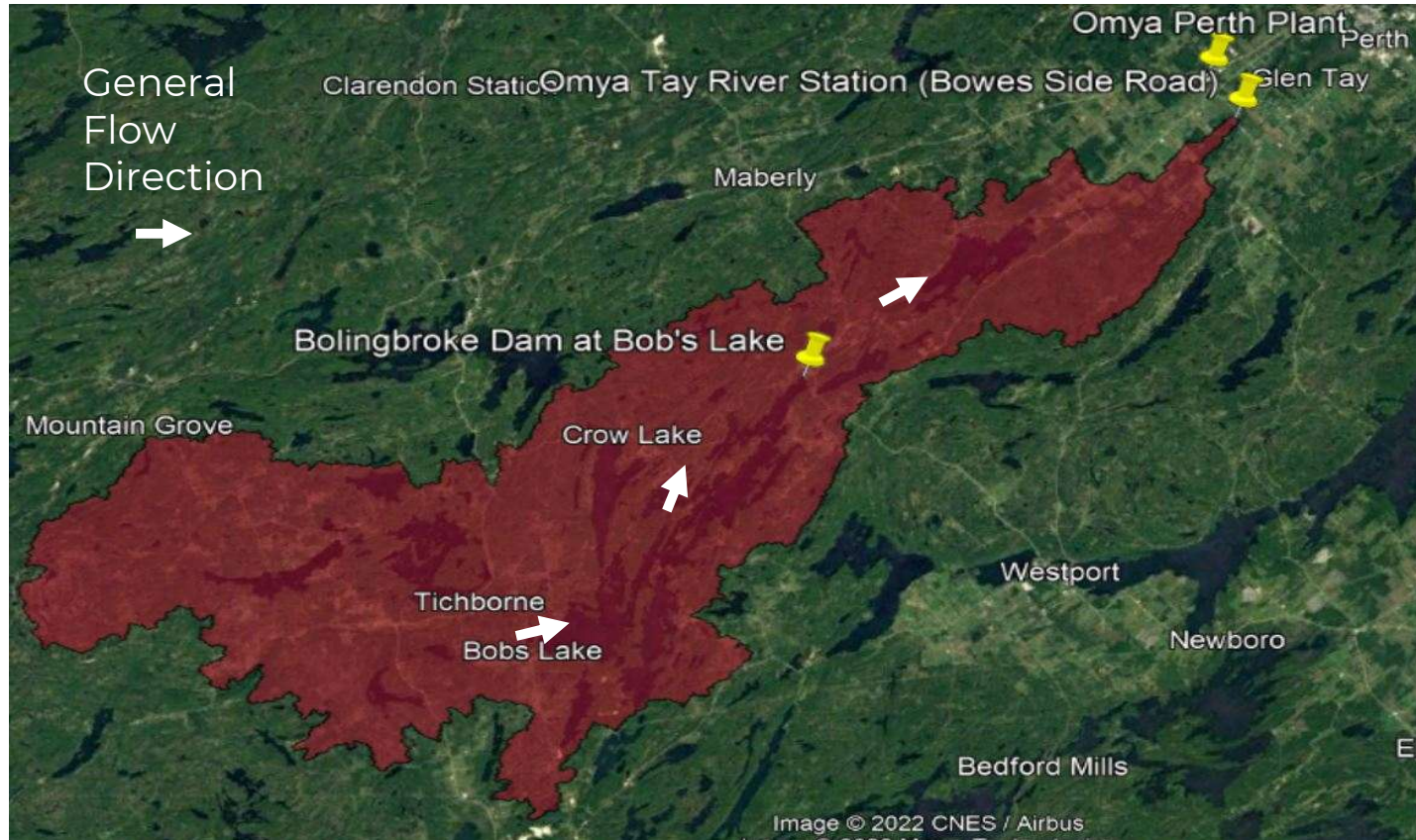
▪The watershed encompasses **six municipalities**.

▪Along the Tay River, there are **four dams** and **one set of locks**.

The **headwaters of the Tay River** serve as a reservoir for the **Rideau Canal**.

Source: Friends of the Tay Watershed (<https://www.taywatershed.ca>)

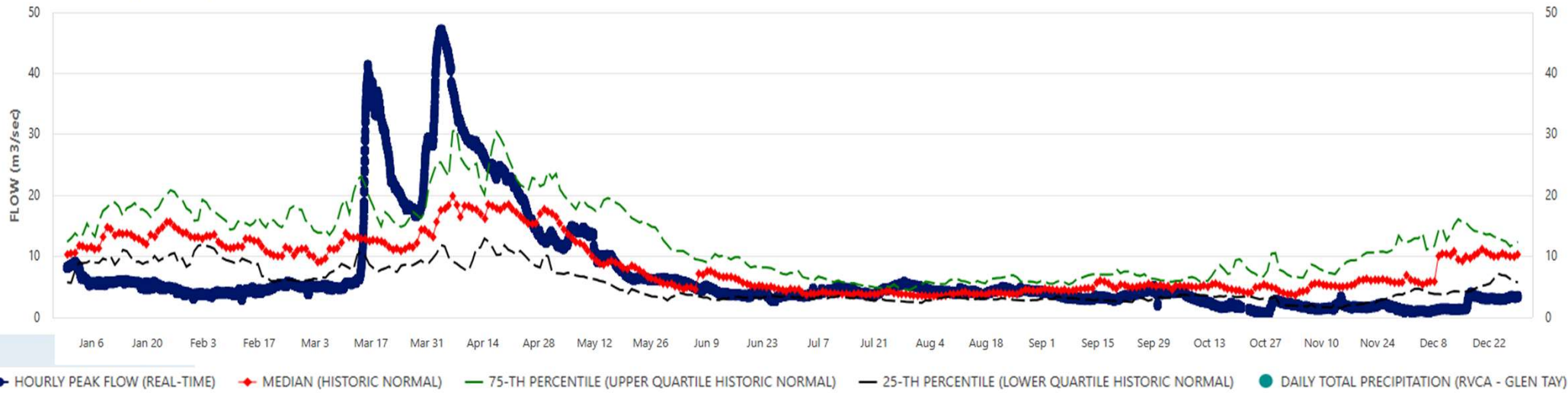
## Watershed Boundary at Omya Tay River Station



# 2025 Tay River Flow

## TAY RIVER AT PERTH [02LA024] - FLOW [CALCULATED, UNVERIFIED]

HOURLY PEAK FLOW & DAILY SUMMARY STATISTICS FOR WSC-02LA024 & RVCA-GLEN TAY. RVCA STATISTICS DERIVED FROM THE 1996-2019 PERIOD OF RECORD\*. TIME STAMP ADJUSTED TO LOCAL STANDARD TIME (GMT-5:00). STREAM GAUGE OWNED & OPERATED BY WATER SURVEY CANADA.

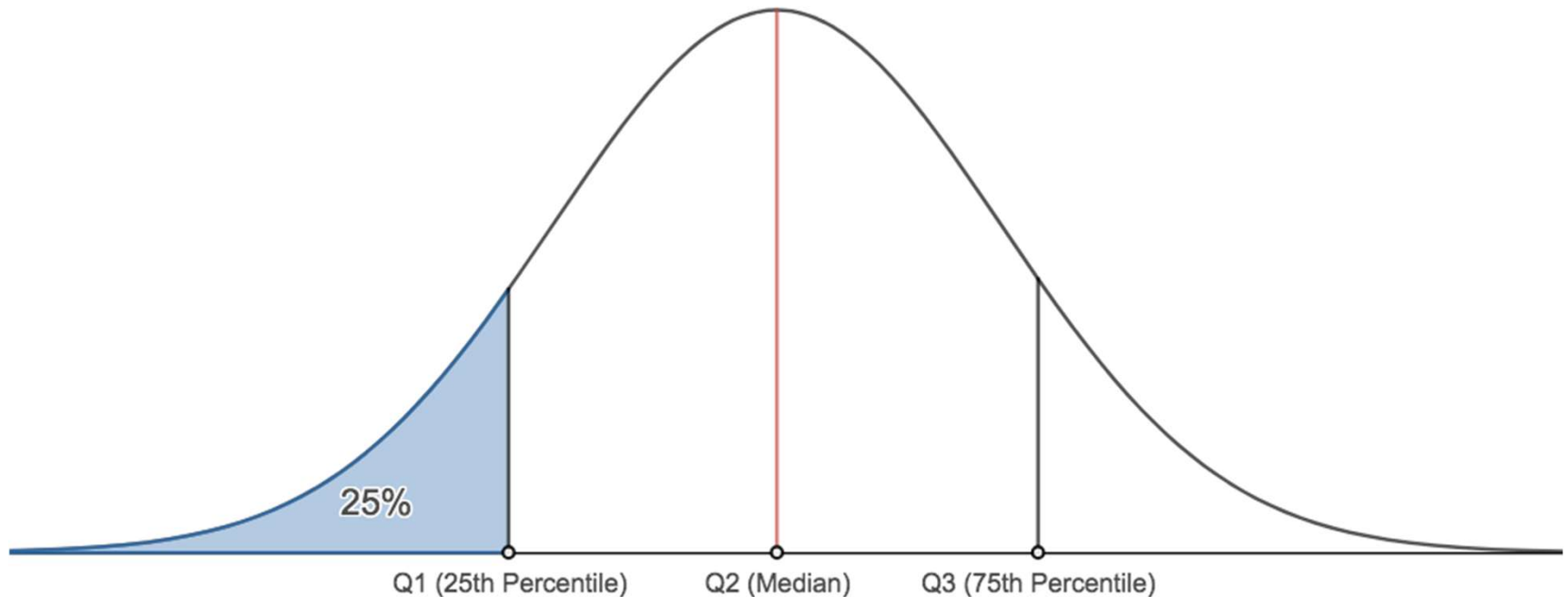


RVCA: [https://his.rvca.ca/rvcafwl/charts/REALTIME\\_Q/FFW\\_02LA024\\_PUBLIC\\_Q.html](https://his.rvca.ca/rvcafwl/charts/REALTIME_Q/FFW_02LA024_PUBLIC_Q.html)



## Tay River Flow by the Numbers

- For 2025, the average over the year was **7.16 m<sup>3</sup>/s**. In general, 75<sup>th</sup> percentile was **12.43 m<sup>3</sup>/s** and the 25<sup>th</sup> percentile **5.33 m<sup>3</sup>/s** with the historic median **8.43 m<sup>3</sup>/s**. We are within the range for the typical median. Source: [Rideau Valley Conservation Authority](#)



## Permit to Take Water Overview

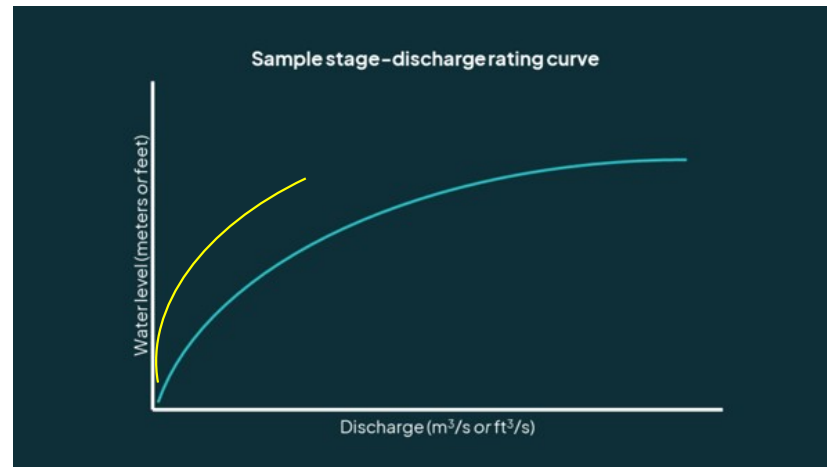
- Omya's PTTW P-300-1069049907, as amended on January 18, 2021, permits the following water taking until November 18, 2030:
  - *The maximum total combined taking from all sources shall not exceed 1,483,000 L/day (**0.02 m<sup>3</sup>/s**)*
  - *The maximum total combined taking from all groundwater sources shall not exceed 875,534 L/day (**0.01 m<sup>3</sup>/s**)*
- If groundwater takings exceed 50,000 L/day for more than seven consecutive days, monthly water levels must be recorded at a spare production/monitoring well
- If production wells (PW1 through PW6) are used for more than 30 consecutive days or a total of 60 days in a year, a report must be submitted summarizing the monitoring data including an interpretation of impacts on groundwater resources

## Permit to Take Water Overview

- Water taking from the Tay River shall immediately cease if the discharge measured is equal to or less than **1 m<sup>3</sup>/s**
- Instantaneous surface water takings from the Tay River cannot exceed 1,030 L/min (**0.02 m<sup>3</sup>/s** – average Tay River Flow **7.16 m<sup>3</sup>/s** )

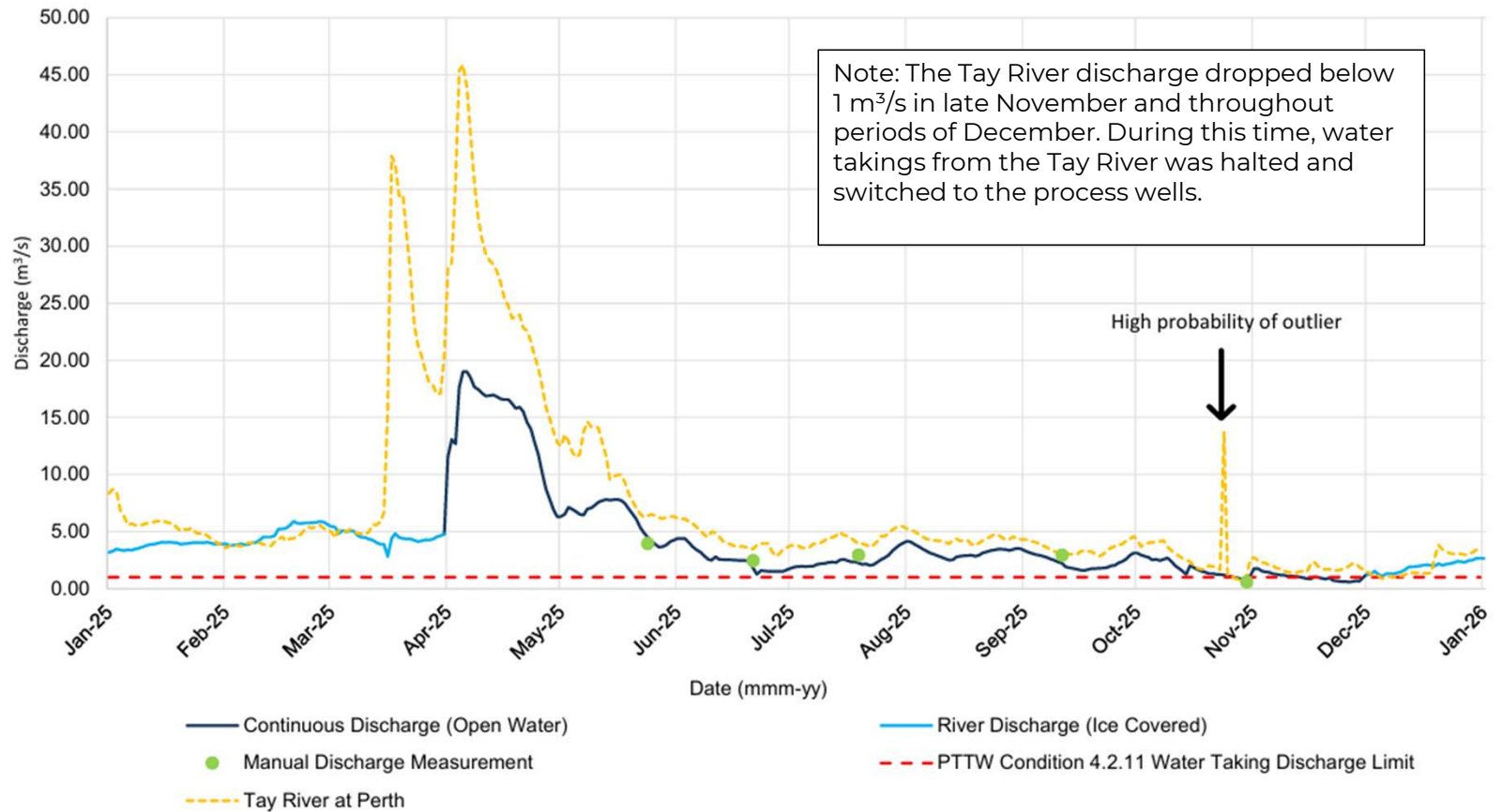
## Tay River Monitoring

- Wells PW1, PW2, PW3, PW4, PW5, PW6, RW1, DP1 and W1 shall be measure with flow meter and totalizer.
- Hydrometric monitoring station maintained by Omya near Bowes Road
- Hydrometric monitoring station includes staff gauge and water level meter and data logger
- Streamflow records were derived from daily water level records using an open water rating curve and adjusted with a secondary rating curve to account for ice conditions

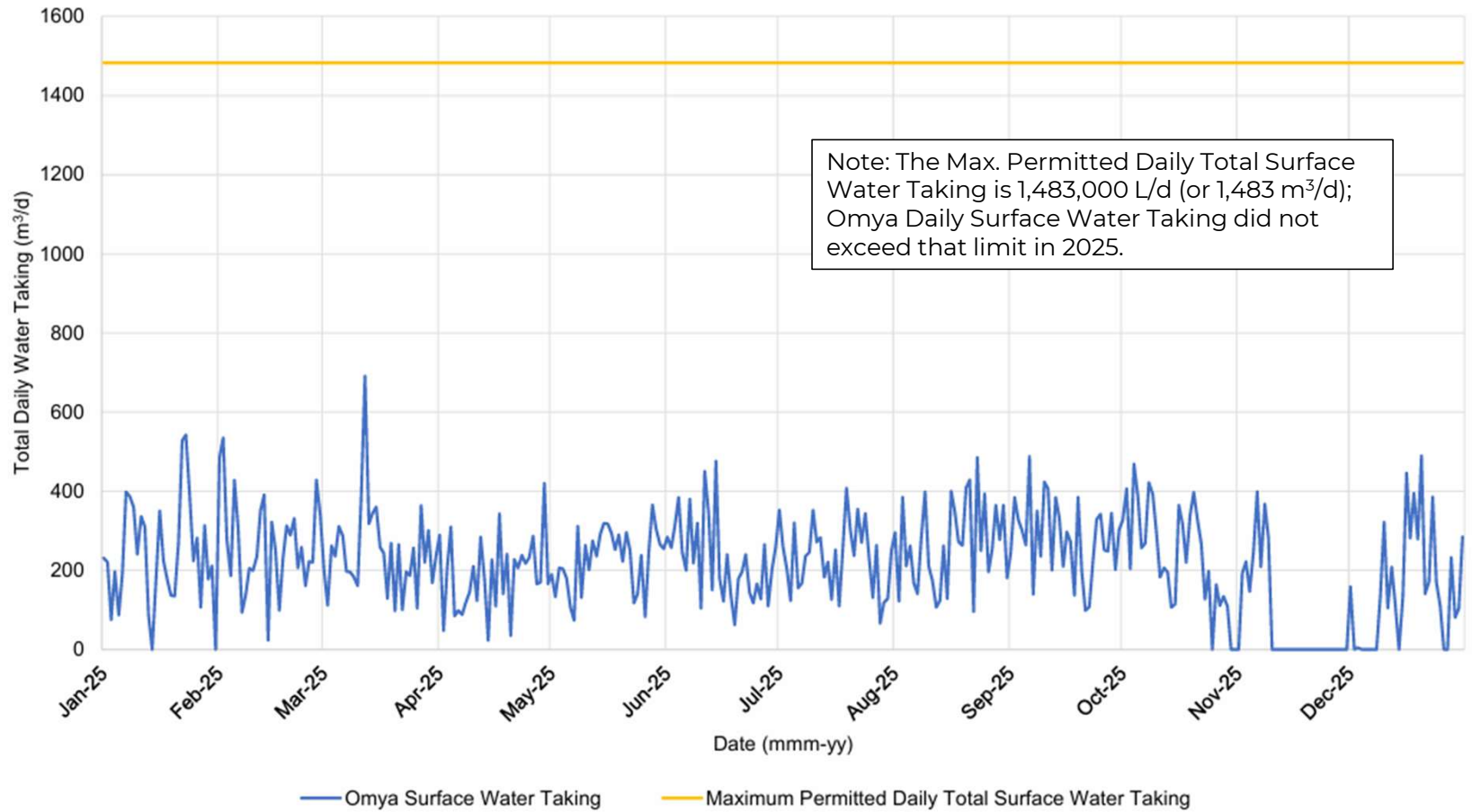


[https://blog.aem.eco/fundamentals\\_of\\_stream\\_discharge\\_measurement](https://blog.aem.eco/fundamentals_of_stream_discharge_measurement)

# Tay River Discharge 2025

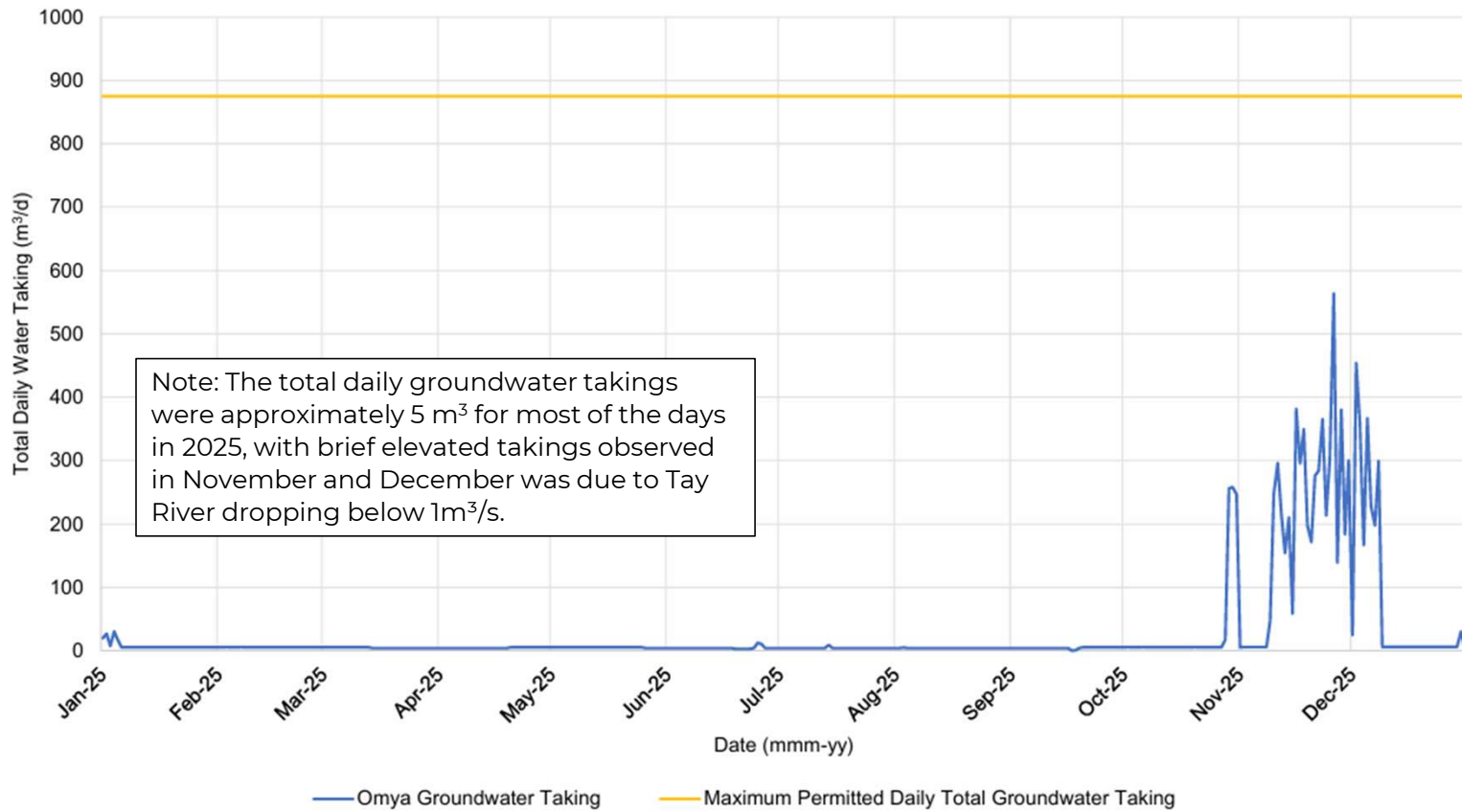


# Tay River Water Taking 2025

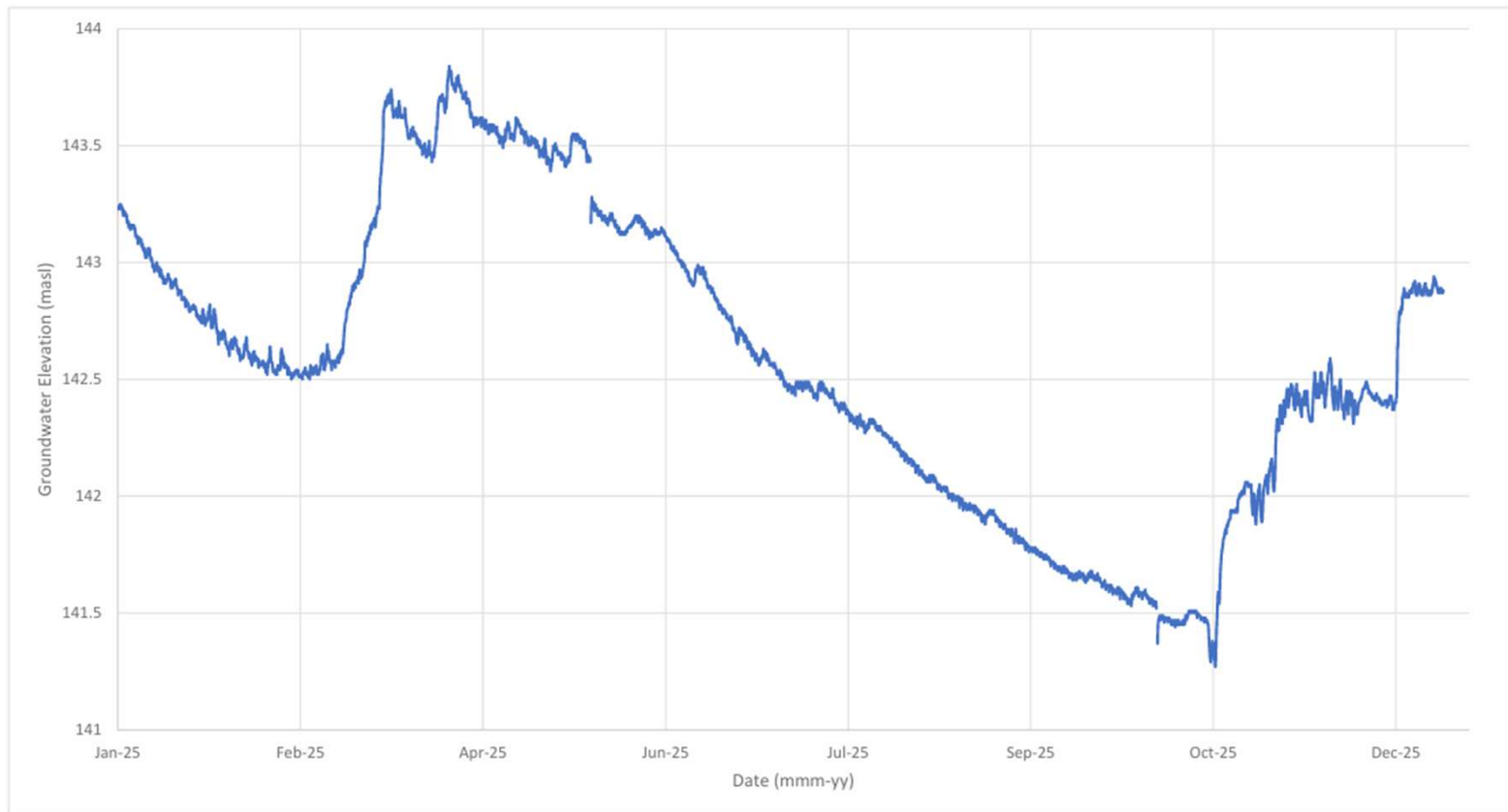


# 4) Groundwater Well Takings

## Daily Groundwater Takings 2025

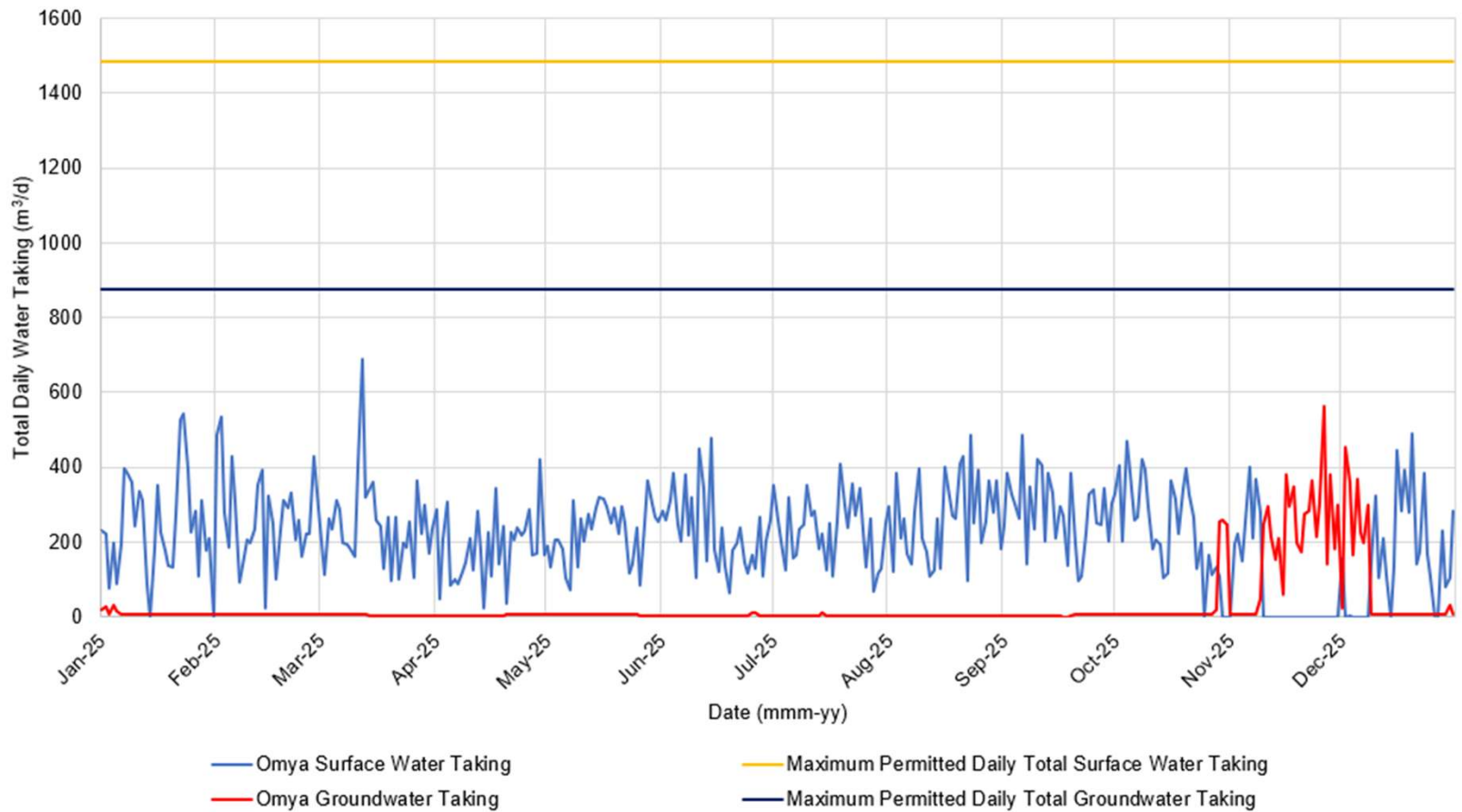


## Hourly Groundwater Elevations at Provincial Groundwater Monitoring Well M3 (PGMN Well W083) 2025



# Summary

## Surface Water and Groundwater Takings 2025



## Summary

- Daily water taking permitted amounts were not exceeded for the groundwater wells and the Tay River surface water takings.
- The Tay River discharge dropped below 1 m<sup>3</sup>/s in late November and throughout periods of December. During this time, water takings from the Tay River was halted and switched to the process wells.
- Surface water takings occurred when river flow was above 1.0 m<sup>3</sup>/s; no impacts on the downstream river were expected.

Thank you!

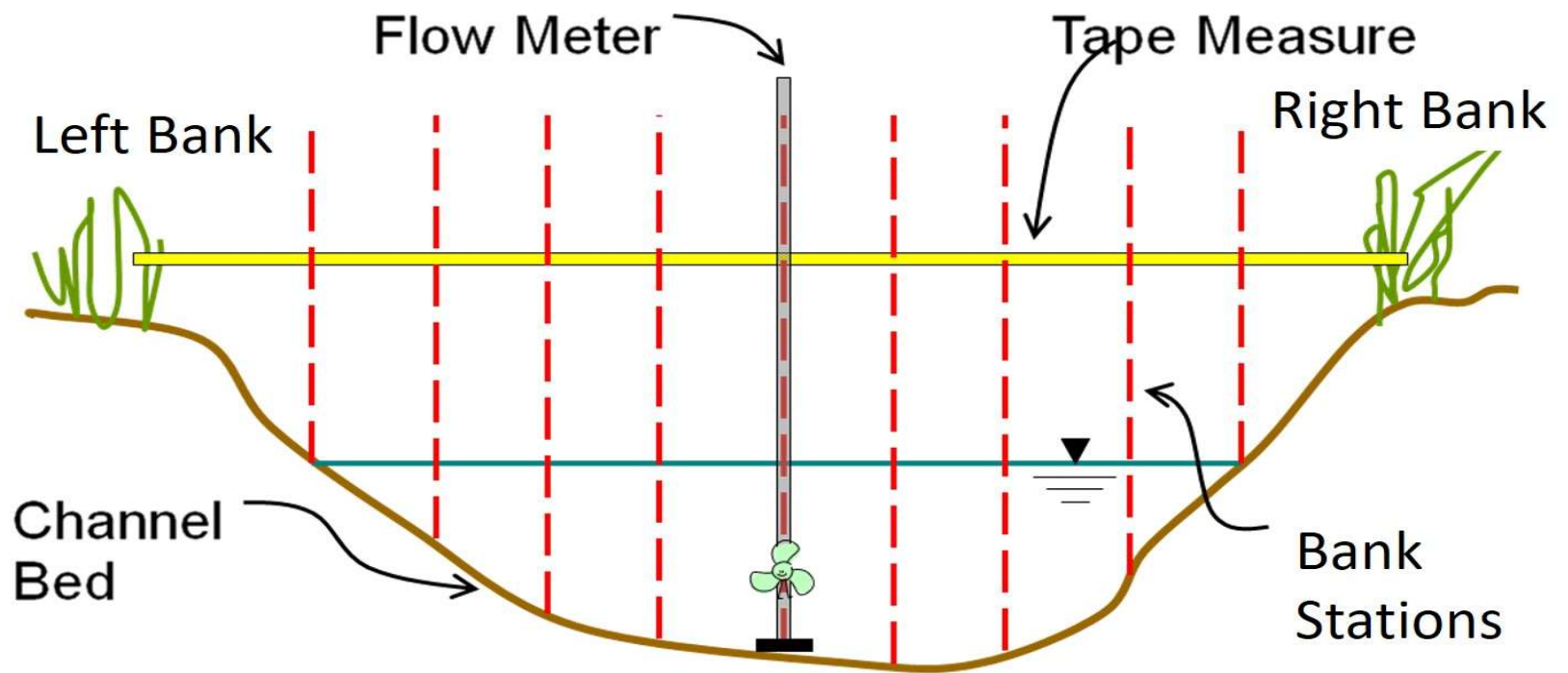
*wsp.com*

wsp

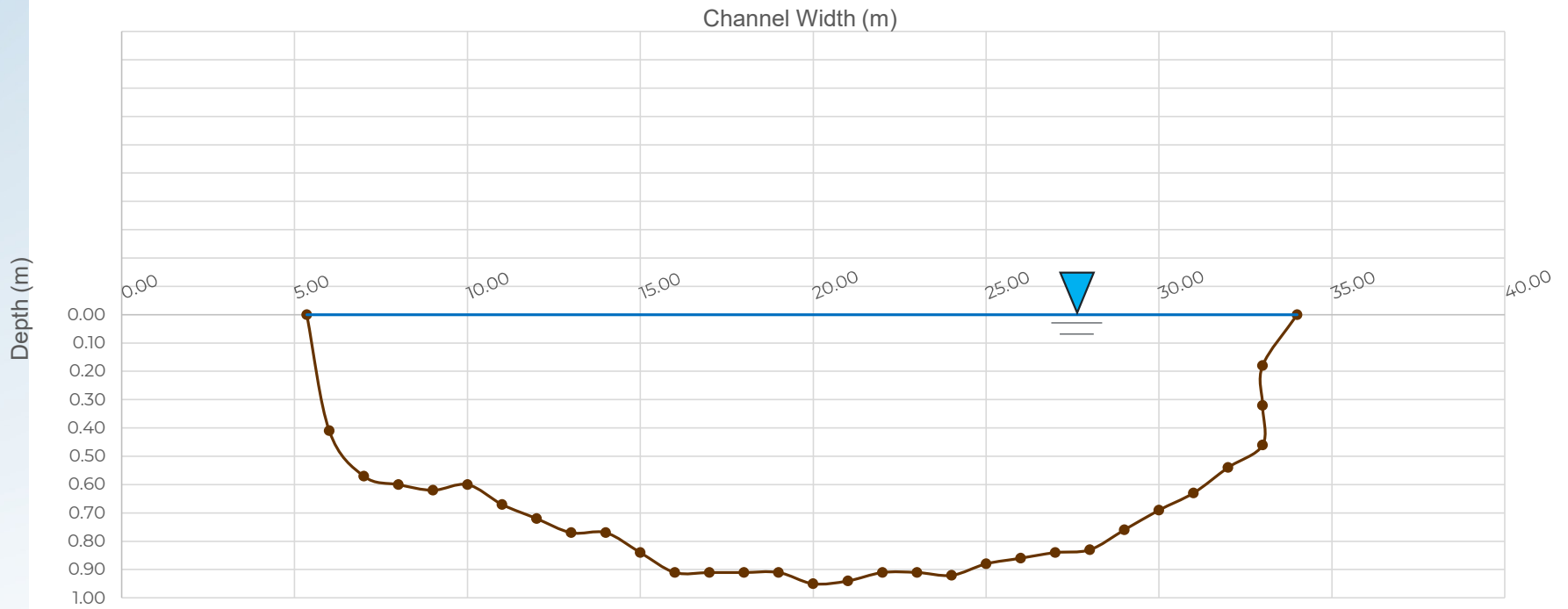
### 3) Water Taking Permitting Overview

- Under the *Ontario Water Resources Act.*, R.S.O. 1990, c. O.40, all water takings (groundwater and surface water) in excess of 50,000 L/day require a permit
- Water takings in excess of 50,000L/day and under 400,000 L/day are eligible to be registered under the Environmental Activity and Sector Registry (EASR)
- EASR's require self registration, usually with the help of a qualified professional and cover routine or lower risk water taking activities
- Water takings in excess of 400,000 L/day require a Permit to Take Water (PTTW), covering non routine or higher risk water taking activities

# Streamflow Manual Measurements



# Sample Tay River Cross Section



\*Bed geometry per recorded survey measurements